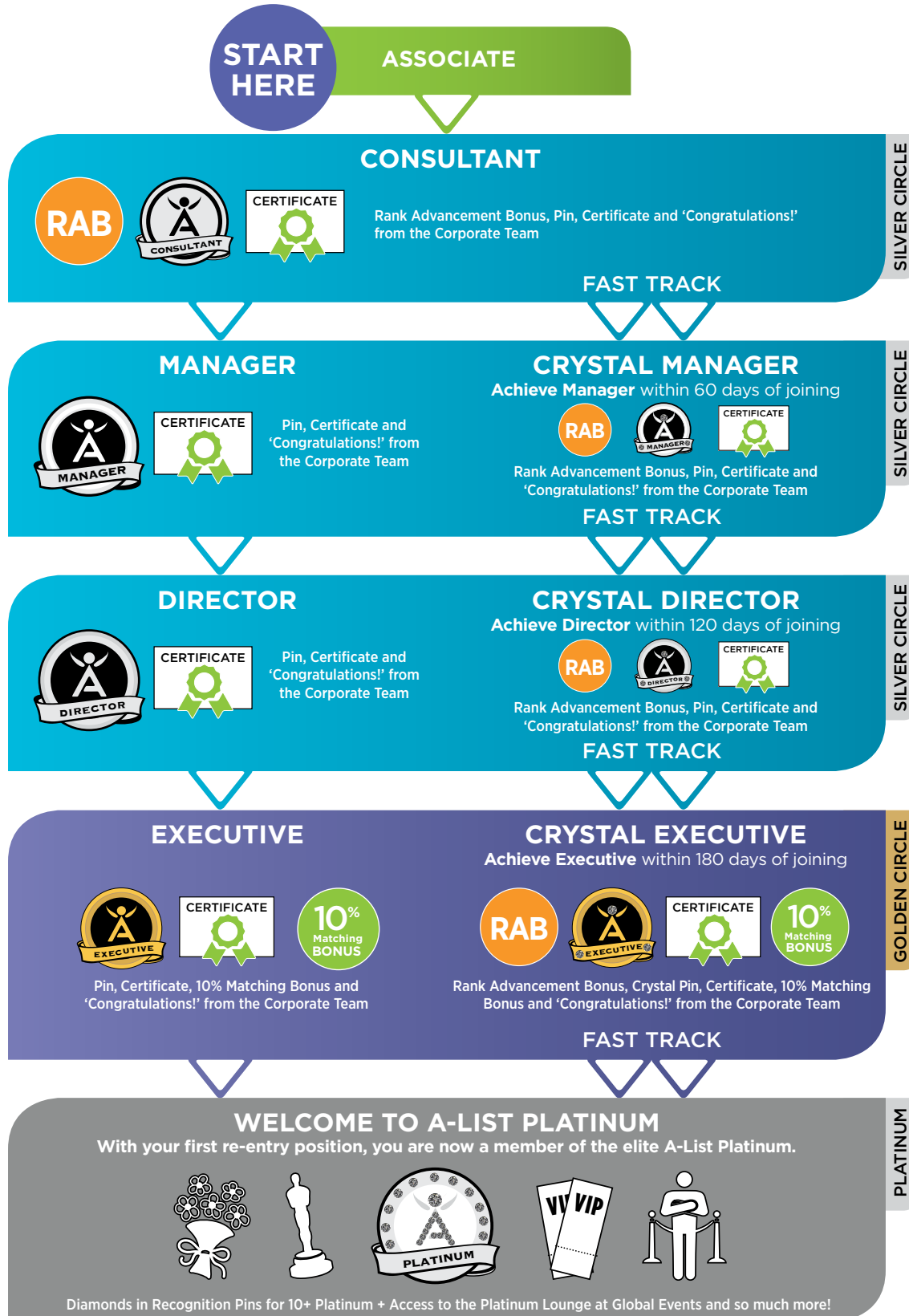


YOUR PATH WITH PURPOSE

Accelerate your business. Grow your wealth.

Your hard work deserves to be rewarded and the Isagenix Team Compensation Plan is the market-leading! The higher you climb, the more you have to look forward to: cash bonuses, corporate recognition and more.



- Recognition Pins:
- Rank Advancement Bonus:
- Rank Advancement Certificate:

Earning levels for Isagenix Independent Associates that appear in this publication are examples and should not be construed as typical or average. Income level achievements are dependent upon the individual Associate's business skills, personal ambition, time, commitment, activity and demographic factors. Recognition and bonuses are subject to change. For average earnings, see the Isagenix Independent Associate Earnings Statement found at www.IsagenixEarnings.com.



RECOGNITION LEVELS & CYCLE REQUIREMENTS

SILVER CIRCLE

The Silver Circle programme is our way of recognizing Consultants, Managers, Crystal Managers, Directors and Crystal Directors for achieving new milestones in the Isagenix Team Compensation Plan. As you earn additional stars, you will be awarded an elegant, new pin to commemorate your success.



CONSULTANT YOU SHARE

To become a Consultant, you must be active and develop one personally sponsored active Associate on both your Left Sales Team and Right Sales Team.



MANAGER YOU SHARE, THEY SHARE

To become a Manager, you must be active and develop two personally sponsored Consultants.



CRYSTAL MANAGER YOU SHARE, THEY SHARE

To become a Crystal Manager, you must be active and develop two personally sponsored Consultants **within your first 60 days of joining.**



DIRECTOR YOU SHARE, THEY SHARE, REPEAT (x3)

To become a Director, you must be active and develop six personally sponsored Consultants.



CRYSTAL DIRECTOR YOU SHARE, THEY SHARE, REPEAT (x3)

To become a Crystal Director, you must be active and develop six personally sponsored Consultants **within your first 120 days of joining.**

CONSULTANTS, MANAGERS, CRYSTAL MANAGERS, DIRECTORS AND CRYSTAL DIRECTORS

1-Star Silver Circle	10-19 cycles	£442.60-£840.94 per week*
2-Star Silver Circle	20-39 cycles	£885.20-£1,726.14 per week*
3-Star Silver Circle	40-59 cycles	£1,770.40-£2,611.34 per week*
4-Star Silver Circle	60-99 cycles	£2,655.60-4,381.74 per week*
5-Star Silver Circle	100-149 cycles	£4,426.00-£6,594.74 per week*
6-Star Silver Circle	150-199 cycles	£6,639.00-£8,807.74 per week*
7-Star Silver Circle	200-249 cycles	£8,852.00-£11,020.74 per week*
8-Star Silver Circle	250 cycles	£11,065.00 per week*

Cycle values must be sustained to maintain earning levels.

The ability to earn income under the Isagenix Team Compensation Plan depends on many factors including an individual Associate's business, social, and sales skills; personal ambition and activity; availability of time and financial resources; and access to a large network of family, friends, and business contacts. Isagenix cannot and does not guarantee any particular level of earnings. Even Associates who dedicate a significant amount of time, effort, and personal funds may not achieve a meaningful level of success. For average earnings, please refer to the Isagenix Earnings Disclosure Statement at IsagenixEarnings.com. **NOTE: Isagenix will count Team Cycle Bonuses, PIBs, and Matching Team Cycle Bonuses toward qualification.**

*Amounts shown in this document are converted from USD to GBP using a conversion rate of 1.22. Please note that this is not a fixed exchange rate and will be converted to the local currency at the advertised exchange rate.

GOLDEN CIRCLE

The Golden Circle program distinguishes Executives and Crystal Executives for reaching new milestones in their Isagenix income. As you earn additional stars, you will be awarded an elegant, new pin commemorating your achievement.



EXECUTIVE YOU SHARE, THEY SHARE, REPEAT (x5)

To become an Executive, you need to be active and develop 10 personally sponsored Consultants (five on your left team, five on your right team).



CRYSTAL EXECUTIVE YOU SHARE, THEY SHARE, REPEAT (x5)

To become a Crystal Executive, you need to be active and develop 10 personally sponsored Consultants (five on your left team, five on your right team) **within 180 days of your join date.**

GOLDEN CIRCLE LEVEL EXECUTIVES AND CRYSTAL EXECUTIVES

1-Star Golden Circle	10-19 cycles	£442.60-£840.94 per week*
2-Star Golden Circle	20-39 cycles	£885.20-£1,726.14 per week*
3-Star Golden Circle	40-59 cycles	£1,770.40-£2,611.34 per week*
4-Star Golden Circle	60-99 cycles	£2,655.60-£4,381.74 per week*
5-Star Golden Circle	100-149 cycles	£4,426.00-£6,594.74 per week*
6-Star Golden Circle	150-199 cycles	£6,639.00-£8,807.74 per week*
7-Star Golden Circle	200-249 cycles	£8,852.00-£11,020.74 per week*
8-Star Golden Circle	250 cycles	£11,065.00 per week*

PLATINUM

Compound your success with our re-entry rankings. Once you achieve 225 cycles in a week for three consecutive weeks and are approved for a re-entry position, you are now at the highest Isagenix recognition rank level, Platinum. As you earn additional stars, you will be awarded an elegant, new pin commemorating your achievement.



PLATINUM LEVEL EXECUTIVES AND CRYSTAL EXECUTIVES

7-Star Platinum	200-249 cycles	£8,852.00-£11,020.74 per week
8-Star Platinum	250-299 cycles	£11,065.00-£13,233.74 per week
9-Star Platinum	300-349 cycles	£13,278.00-£15,446.74 per week
10-Star Platinum	350-399 cycles	£15,491.00-£17,659.74 per week
11-Star Platinum	400-449 cycles	£17,704.00-£19,872.74 per week
12-Star Platinum	450-499 cycles	£19,917.00-£22,085.74 per week
13-Star Platinum	500-549 cycles	£22,130.00-£24,298.74 per week
14-Star Platinum	550-599 cycles	£24,343.00-£26,511.74 per week
15-Star Platinum	600-649 cycles	£26,556.00-£28,724.74 per week
16-Star Platinum	650-699 cycles	£28,769.00-£30,937.74 per week
17-Star Platinum	700-749 cycles	£30,982.00-£33,150.74 per week
18-Star Platinum	750-799 cycles	£33,195.00-£35,363.74 per week
19-Star Platinum	800-849 cycles	£35,408.00-£37,576.74 per week
20-Star Platinum	850-899 cycles	£37,621.00-£39,789.74 per week

ISAGENIX MILLIONAIRE**

An Isagenix Millionaire is defined as an Associate who has cumulatively earned US\$1 million or more with Isagenix. These Associates will be recognized through the A-List Millionaire program.



The ability to earn income under the Isagenix Team Compensation Plan depends on many factors including an individual Associate's business, social, and sales skills; personal ambition and activity; availability of time and financial resources; and access to a large network of family, friends, and business contacts. Isagenix cannot and does not guarantee any particular level of earnings. Even Associates who dedicate a significant amount of time, effort, and personal funds may not achieve a meaningful level of success. For average earnings, please refer to the Isagenix Earnings Disclosure Statement at IsagenixEarnings.com. **NOTE: Isagenix will count Team Cycle Bonuses, PIBs, and Matching Team Cycle Bonuses toward qualification.**

*Amounts shown in this document are converted from USD to GBP using a conversion rate of 1.22. Please note that this is not a fixed exchange rate and will be converted to the local currency at the advertised exchange rate.

**Isagenix Millionaires are defined as Isagenix Associates who have cumulatively earned US\$1 million or more with Isagenix. Earning levels for this Isagenix Independent Associate substantially exceed the average results achieved by all Associates during the same time periods level achievements depend on many factors, including the individual Associate's business and networking skills, personal ambition, time commitment, work habits and other abilities. For average earnings, please see the Isagenix Independent Associate Earnings Statement found at IsagenixEarnings.com.