



# Compensation Plan

# Money Talk

## **Now Money**

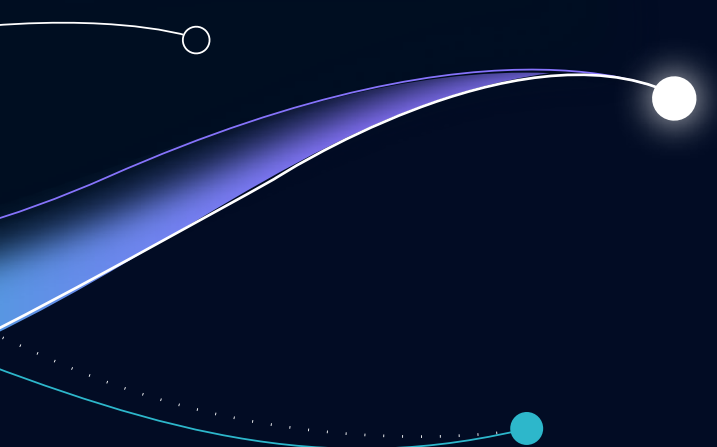
How much money would make you breathe just a little easier, right now?

## **Choice Money**

How much money would allow you to live a comfortable lifestyle where you have choice over your time & spending?

## **Dream Money**

How much money would allow you to live a life you dream about? Where money and time is never an objection to anything you desire.



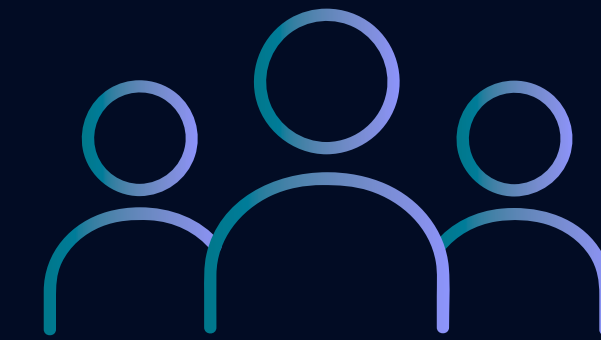
# Six Ways To Earn



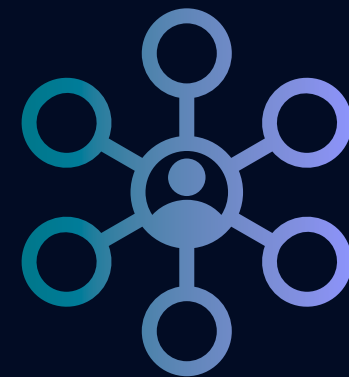
**Retail Profits**



**Product Introduction  
Bonuses**



**Team Bonuses**



**Executive Matching  
Team Bonuses**



**Incentives and  
Promotions**



**Rank Advancement  
Bonuses**



# Glossary

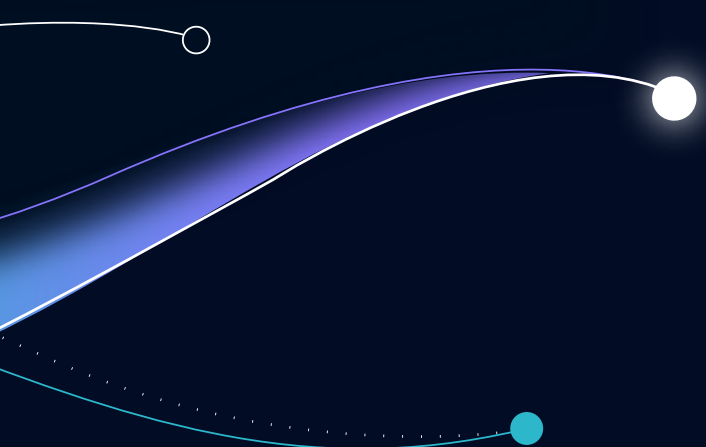
## **BV = Business Volume**

The point value assigned to each commissionable product

## **QV = Qualifying Volume**

A point value assigned to each Commissionable Product (including packs). QV is used to measure Active Status, paid-as rank, and qualifying enrolments for promotions. BV and QV are stated together at the time of purchase, and where BV may decrease if a product is discounted, QV typically will not.

**Active Status = Minimum 100 QV in previous 30 days**



# Autoship Rewards

Order shipped approximately every 30 days

MEMBER TYPE	VALUE	WITH SUBSCRIPTION	ANNUAL MEMBERSHIP FEE	PRICING <sup>^</sup>	ELIGIBLE FOR ADDITIONAL DISCOUNTS AND REWARDS
PREFERRED CUSTOMER	Best	Yes	\$0	25% off retail	Yes
	Better	No	\$0	20% off retail	No
GUEST	One time order without creating an account and pay Guest (retail) pricing				

<sup>^</sup>Percent pricing discounts are approximate.



# Rank Advancements

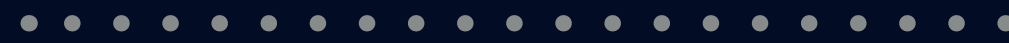
- 5** Executive/Crystal Executive
- 4** Director/Crystal Director
- 3** Manager/Crystal Manager
- 2** Consultant
- 1** Associate



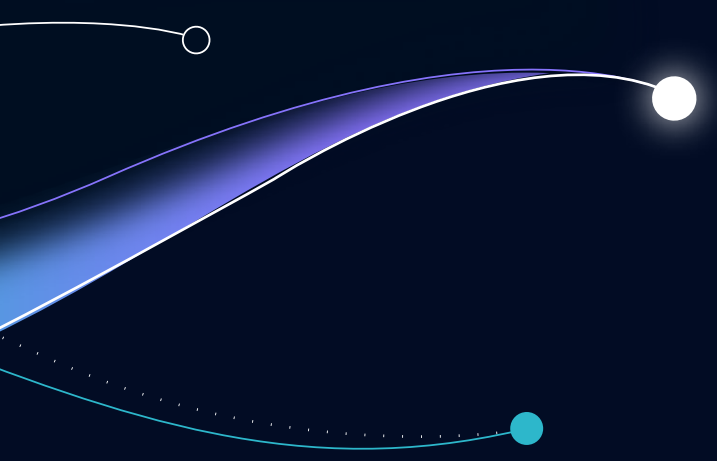
# Associate



**YOU**



Personal purchases/ retail direct sales  
totaling **100 QV** in prior 30days.



# Retail Profit



**YOU**

**BUY**

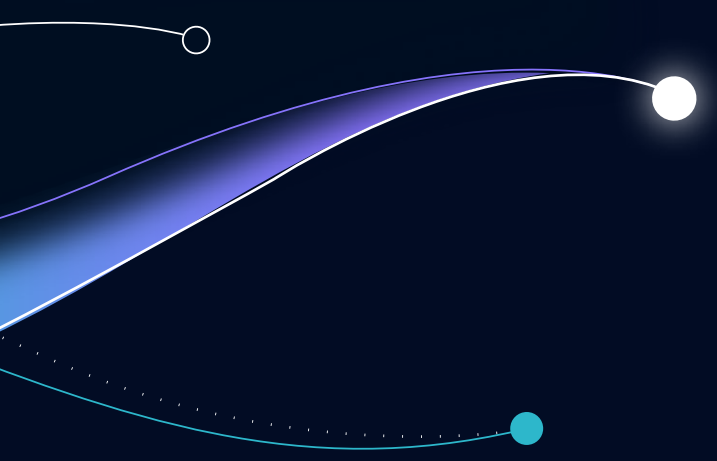


**Wholesale**

**SELL**



**Retail**



# 20% Product Introduction Bonus (PIB)

**EXAMPLE:**



**YOU**



**NEW  
CUSTOMER**

+



**FLAGSHIP PACK**

Approx. \$600

Approx.  
**= \$120**

When your brand-new, personally enrolled Customer places their first order, no matter what they order, you'll earn a one-time 20% Product Introduction Bonus (PIB) on the pre-GST price of their total purchase.



# Consultant

ORDERS IN PRIOR 30 DAYS



Qualifying Volume (QV)  
100 QV

LEFT TEAM

RIGHT TEAM



YOU  
US \$50 BONUS  
Consultant Bonus\*

YOUR PERSONALLY  
ENROLLED ASSOCIATE  
100 QV in prior 30 days

YOUR PERSONALLY  
ENROLLED ASSOCIATE  
100 QV in prior 30 days



\$120 PIB

\$120 PIB

\$600 Pack  
(Pre-GST)

\$600 Pack  
(Pre-GST)

A	ASSOCIATE	PIB	\$120
		PIB	\$120
		TOTAL PIB	\$240
C	CONSULTANT BONUS		\$50
		TOTAL	\$290

\*Rank Advancement Bonuses are a promotional incentives that are available at the time of publication; they are not considered a direct component of the Compensation Plan and may be changed, modified, or discontinued by Isagenix at any time.



# Consultant



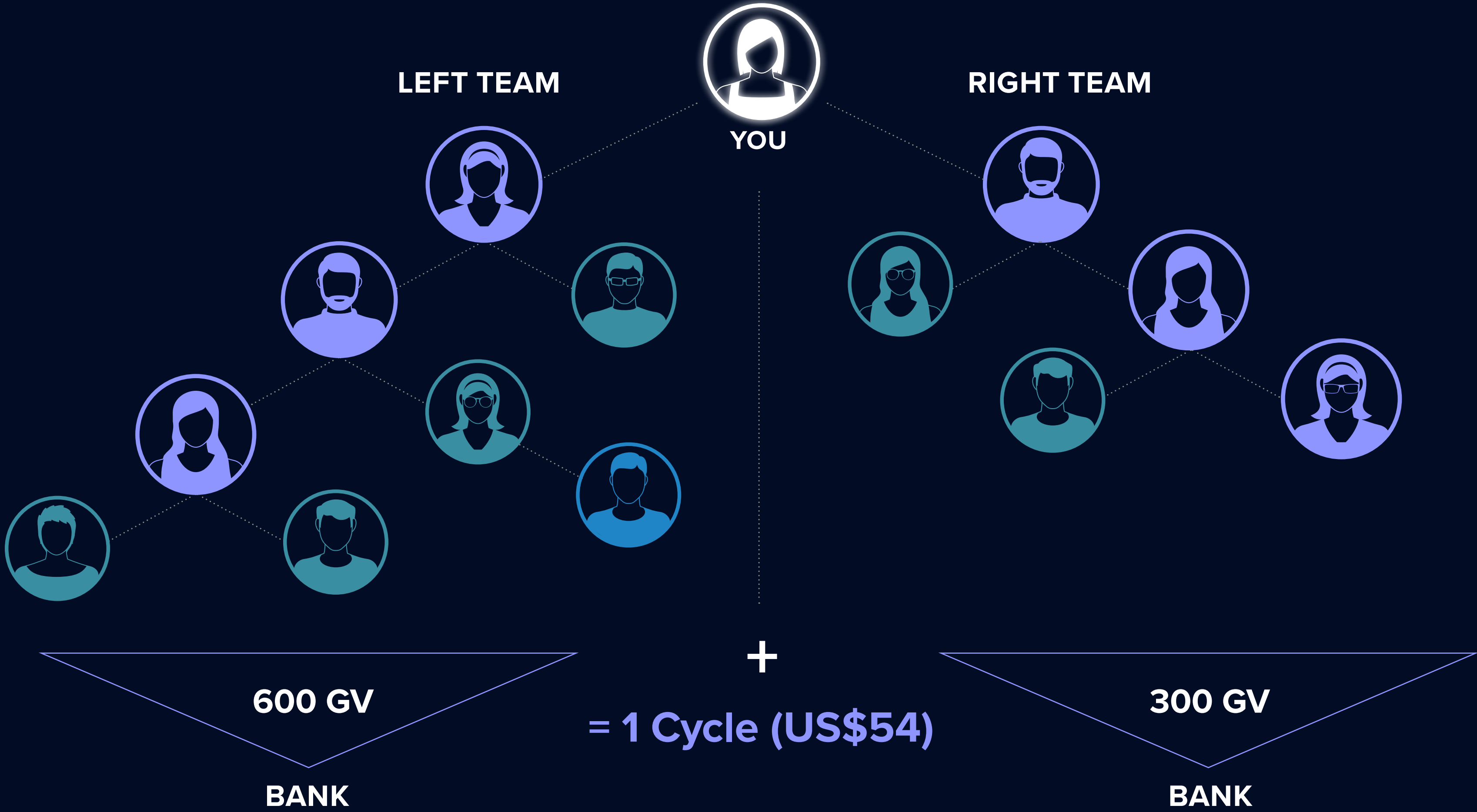
## 30-Day Consultant Checklist

- ✓ At least 100 QV
- ✓ At least 100 combined QV from your left team
- ✓ At least 100 combined QV from your right team

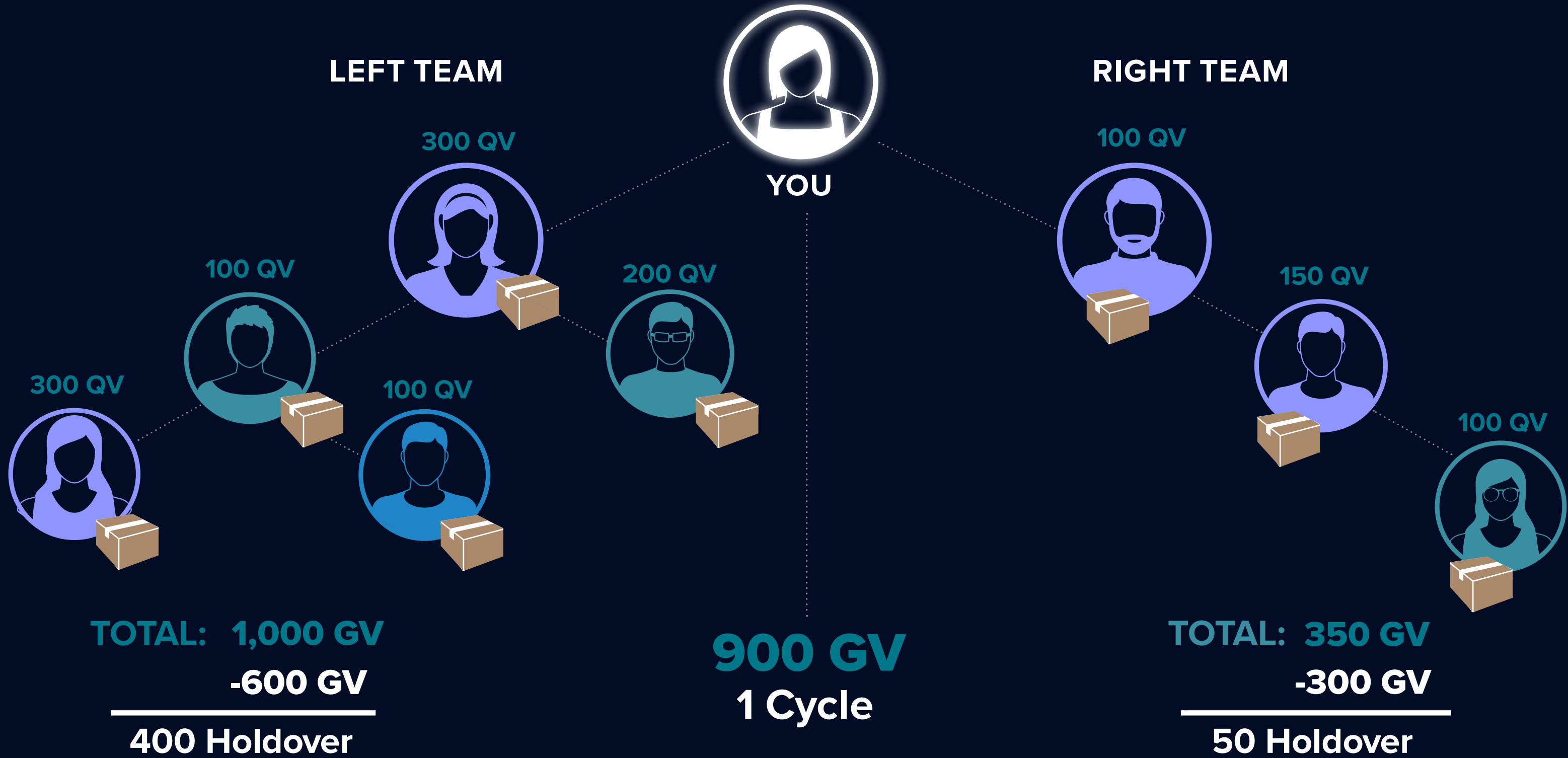
\*Rank Advancement Bonuses are a promotional incentives that are available at the time of publication; they are not considered a direct component of the Compensation Plan and may be changed, modified, or discontinued by Isagenix at any time.



# Cycles (Team Bonuses)



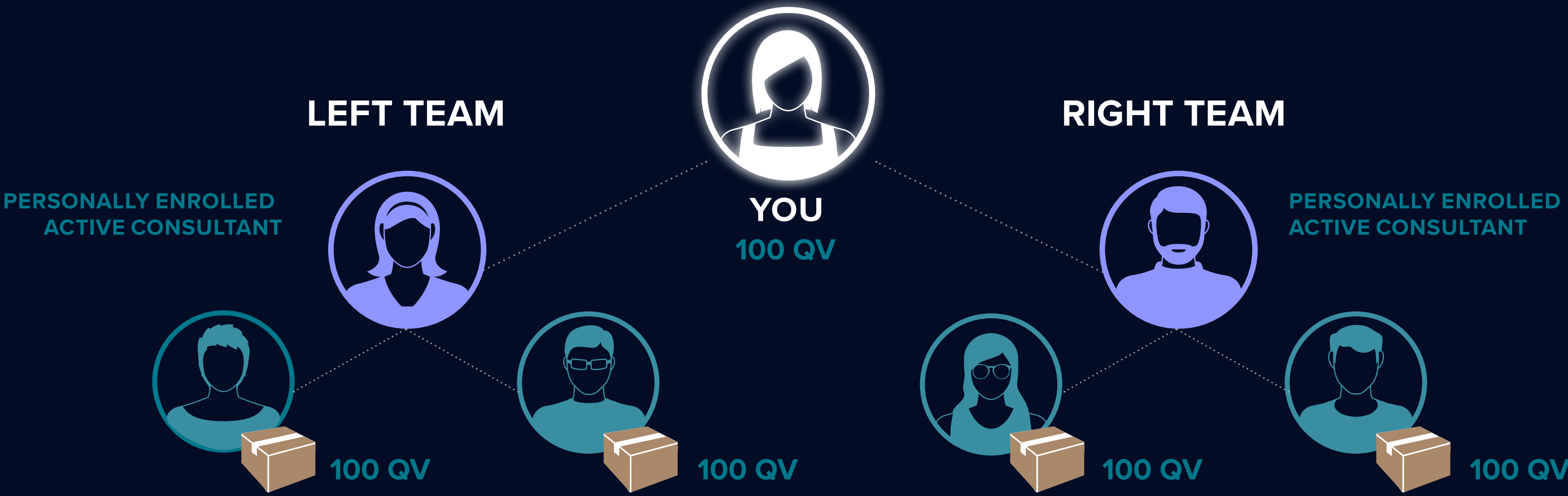
# Holdover Volume



Earn up to 250 Cycles per week on your entire Group Volume



# Consultant Bonuses

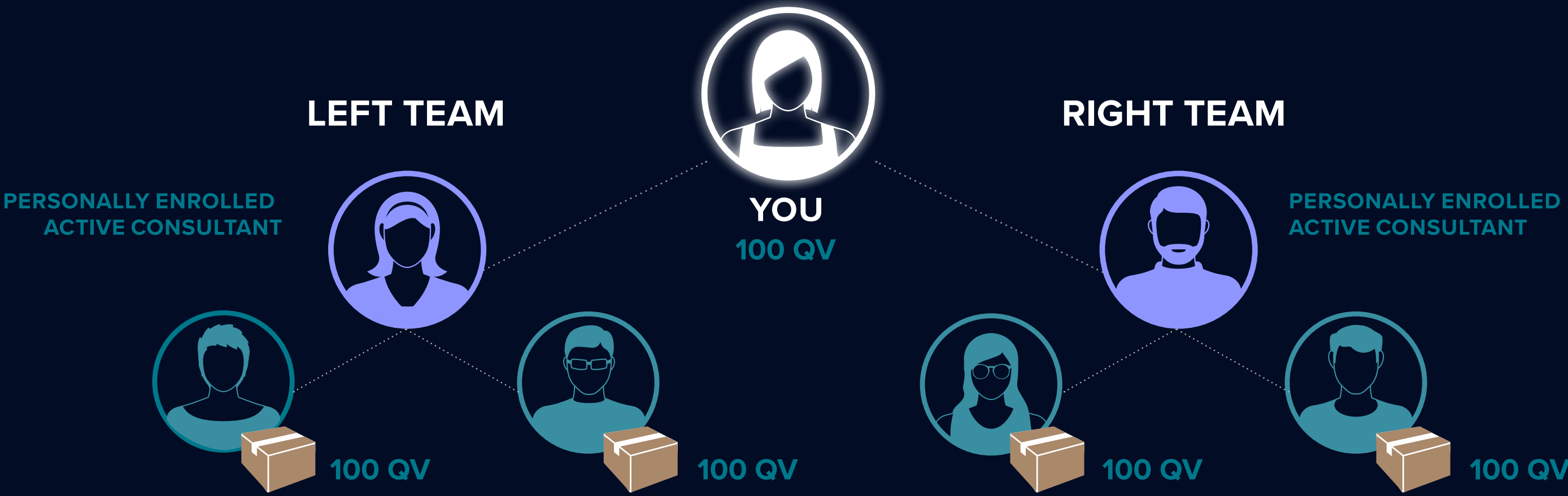


A ASSOCIATE	PIB	\$120
	PIB	\$120
TOTAL PIB		\$240
C CONSULTANT BONUS		\$50
M MANAGER	CONSULTANT DEVELOPMENT BONUSES	\$100
		\$100
TOTAL		\$200
TOTAL		\$490

Receive a **US\$100 Bonus** for **each** personally developed Consultant up to 20 times.



# Manager



A	ASSOCIATE	PIB	\$120
		PIB	\$120
		TOTAL PIB	\$240
C	CONSULTANT	BONUS	\$50
M	MANAGER	CONSULTANT DEVELOPMENT BONUSES	\$100
			\$100
		TOTAL	\$200
		CRYSTAL MANAGER BONUS	\$250
TOTAL			\$740

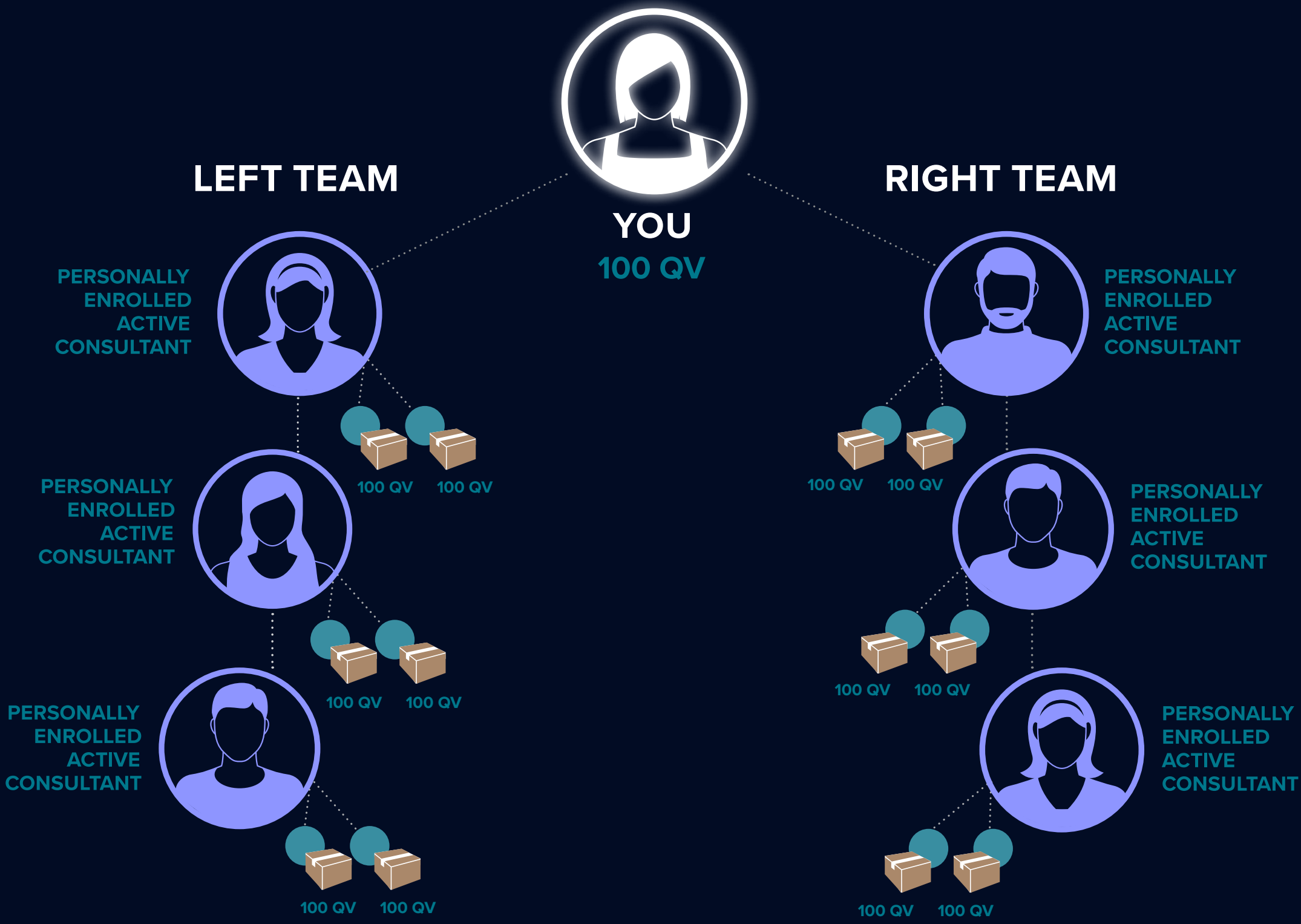
**US\$250 Crystal Manager Bonus\*** when you achieve within 60 days of becoming an Associate

\*Crystal bonuses are a promotional incentive that are available at the time of publication; they are not considered a direct component of the Compensation Plan and may be changed, modified, or discontinued by Isagenix at any time. Time calculations begin on the date you enroll as an Associate.



# Director

**US\$750**  
**Crystal Director Bonus\***  
when you achieve  
within 120 days of  
becoming an Associate



\*Crystal bonuses are a promotional incentive that are available at the time of publication; they are not considered a direct component of the Compensation Plan and may be changed, modified, or discontinued by Isagenix at any time. Time calculations begin on the date you enroll as an Associate.



# Executive

**US\$1000**  
**Crystal Executive Bonus\***  
when you achieve within  
180 days of becoming an  
Associate



\*Crystal bonuses are a promotional incentive that are available at the time of publication; they are not considered a direct component of the Compensation Plan and may be changed, modified, or discontinued by Isagenix at any time. Time calculations begin on the date you enroll as an Associate.



# Executive Benefits

## **Earn 10% Matching Team Bonus Cycles**

As an active Paid-As Executive, you are eligible to receive a 10% Matching Team Bonus on the weekly Team Bonus income of all personally developed Paid-As Consultations, Managers, Directors and Executives.

The 10% Matching Team Bonus is calculated daily and paid weekly. Paid-As Executives can earn up to a maximum of 250 matching bonus cycles per week.



# Rank Advancement Bonues (RABs)



The specific market values are calculated using the Foreign Exchange Multiplier. To calculate your market's equivalent, simply multiply the U.S. amount shown by the applicable Foreign Exchange Multiplier for that specific market. This value is subject to change every quarter based on published exchange rates and will be valid for the following quarter. Amounts shown reflect maximum amount available, are not necessarily representative of what a particular Associate will receive, and are not typical or average. Isagenix cannot and does not guarantee any particular level of earnings. For average earnings, refer to [IsagenixEarnings.com](http://IsagenixEarnings.com).



# Rank Advancement Bonues (RABs)



The specific market values are calculated using the Foreign Exchange Multiplier. To calculate your market's equivalent, simply multiply the U.S. amount shown by the applicable Foreign Exchange Multiplier for that specific market. This value is subject to change every quarter based on published exchange rates and will be valid for the following quarter. Amounts shown reflect maximum amount available, are not necessarily representative of what a particular Associate will receive, and are not typical or average. Isagenix cannot and does not guarantee any particular level of earnings. For average earnings, refer to [IsagenixEarnings.com](http://IsagenixEarnings.com).



# Rank Advancement Bonuses

EARN UP TO **US\$10,550** IN BONUSES!

⋮

RANK ADVANCEMENT BONUSES	
Consultant Bonus	US\$50
Crystal Manager Bonus	US\$250
Crystal Director Bonus	US\$750
Crystal Executive Bonus	US\$1,000
<b>TOTAL RANK ADVANCEMENT BONUSES</b>	<b>US\$2,050</b>

⋮

CYCLE BONUSES	
5 Cycle Bonus	US\$500
1 Star Bonus	US\$1,000
2 Star Bonus	US\$2,000
3 Star Bonus	US\$3,000
<b>TOTAL CYCLE BONUS</b>	<b>US\$6,500</b>

⋮

CONSULTANT DEVELOPMENT BONUSES	
Earn US\$100 for each of your first 20 personally-enrolled Consultants.	
<b>20 Consultants x US\$100</b>	<b>US\$2,000</b>

⋮

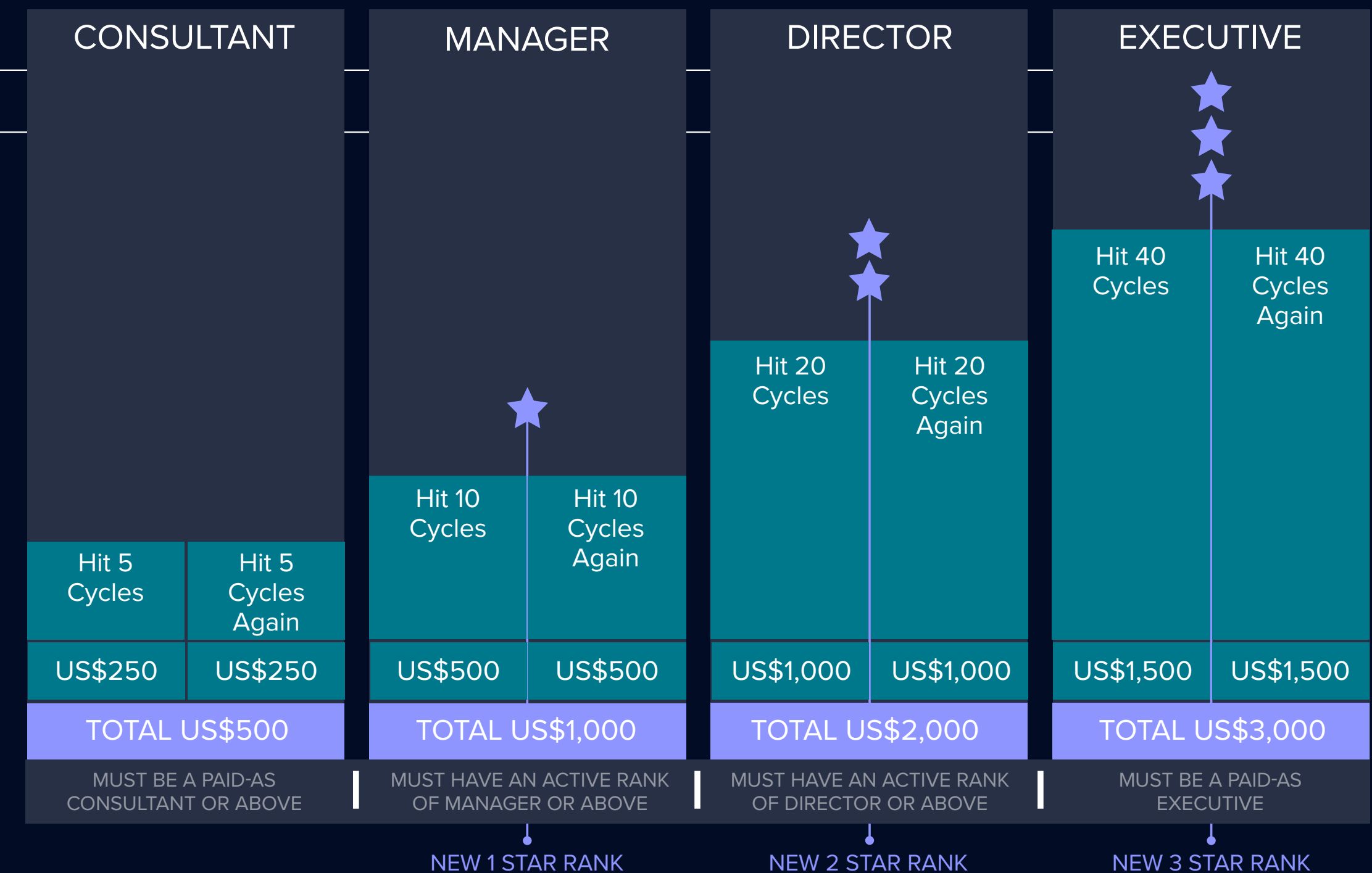
**Total Advancement Bonuses Available  
= US\$10,550**

## Rank Advancement Bonuses

LEVEL	TIMEFRAME	BONUS
Consultant	None	US\$50
Crystal Manager	60 Days	US\$250
Crystal Director	120 Days	US\$750
Crystal Executive	180 Days	US\$1,000

## Cycle

### Bonuses\*



All Silver/Golden Bonuses are paid two weeks in arrears. Product Introduction Bonuses are paid in local currency. All other amounts including Rank Advancement Bonuses, Consultant Bonuses and Double Product Introductory Bonuses are calculated in USD and paid in local currency subject to Foreign Exchange Policy. Please note that Isagenix reserves the right to adjust the Foreign Exchange Policy rate at any time.

\* You must have met the listed qualifications in the same commission week for the first or second time and be a Paid-As Consultant or above the week prior to earning the equivalent cycles indicated. Active Rank is the lowest rank that qualifies during the commission week. You must maintain the required Active Rank or Paid-As Rank for every day of the commission week to be eligible for the Bonus.



# Cycle Payouts

Rank	Weekly Cycles	Income*
Consultant/ Executive	1 Cycle	\$2,808 per year
Consultant/ Executive	5 Cycles	\$14,040 per year
1 Star Silver/ Golden Circle	10 Cycles	\$28,000 - \$53,000 per year
2 Star Silver/ Golden Circle	20 Cycles	\$56,000 - \$109,000 per year
3 Star Silver/ Golden Circle	40 Cycles	\$112,000 - \$165,000 per year
4 Star Silver/ Golden Circle	60 Cycles	\$168,000 - \$278,000 per year
5 Star Silver/ Golden Circle	100 Cycles	\$280,000 - \$417,000 per year
6 Star Silver/ Golden Circle	150 Cycles	\$420,000 - \$554,493 per year
7 Star Silver/ Golden Circle	200 Cycles	\$557,280 - \$693,813 per year
8 Star Silver/ Golden Circle	250 Cycles	\$696,600 and up per year

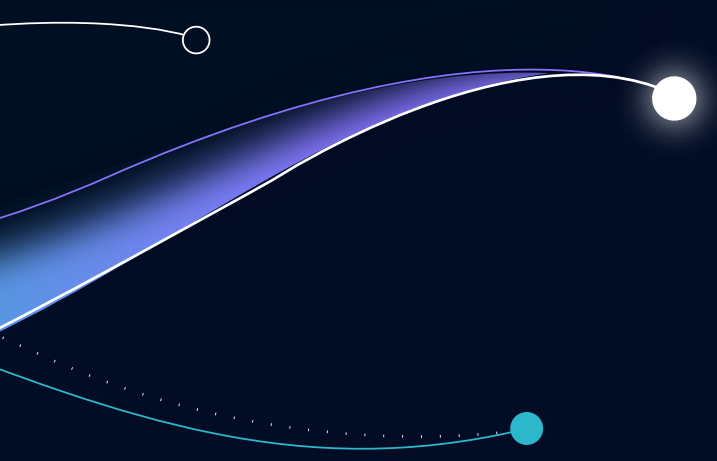
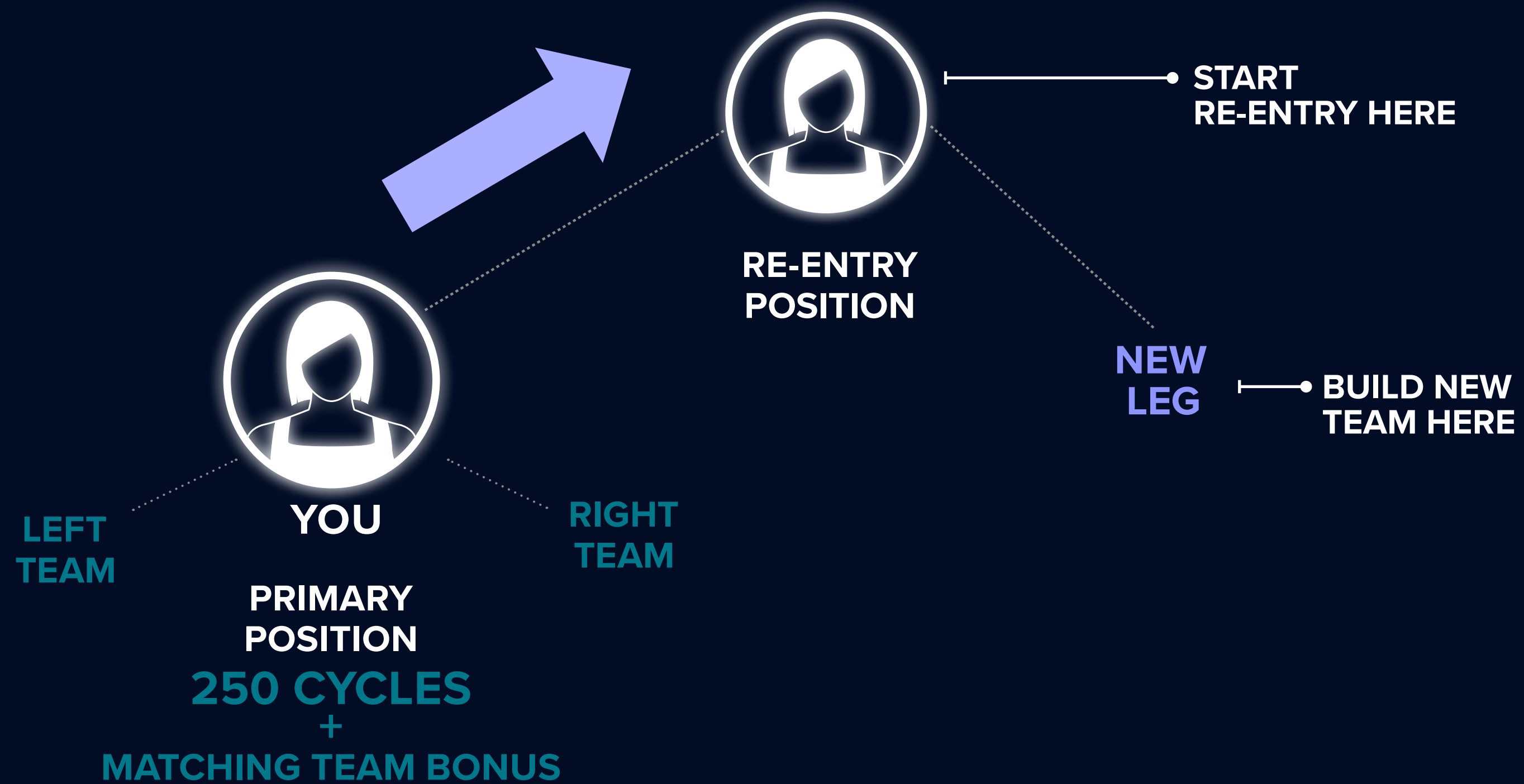
**Note: Isagenix will count Team Cycle Bonuses, PIBs and Matching Team Cycle Bonuses toward recognition rank qualification.**

## Where do you see yourself?

\*Earning levels for Isagenix® Independent Associates that appear in this publication are examples and should not be construed as typical or average. Income level achievements are dependent upon the individual Associate's business skills, personal ambition, time, commitment, activity and demographic factors. For average earnings, see the Isagenix Independent Associate Earnings Statement found at [www.IsagenixEarnings.com](http://www.IsagenixEarnings.com). All dollar amounts in USD. Local amounts may be subject to the Isagenix Foreign Exchange Policy.



# Re-Entry Position



# Summary

## **Enjoy maximum benefits of the Compensation Plan**

Be a product of the products

Learn how to sell Isagenix

Be on Subscription Rewards

Build Consultants

Teach your team to do the same



# Tools

To better understand the Isagenix Compensation Plan, check out these important links:

---



Earn Active Income

VIDEO



Your Path to Leveraged Income

VIDEO

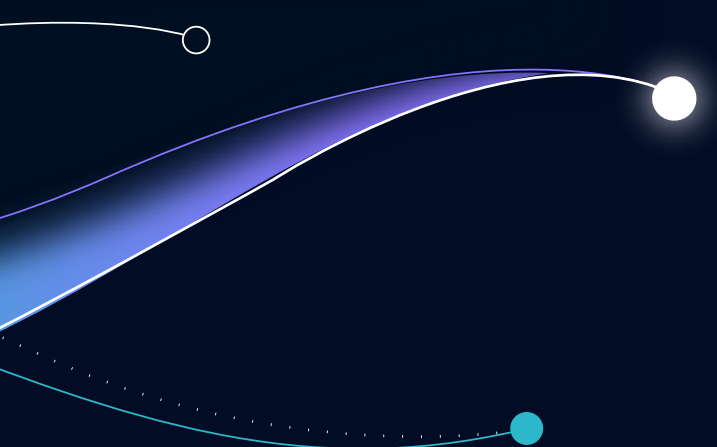


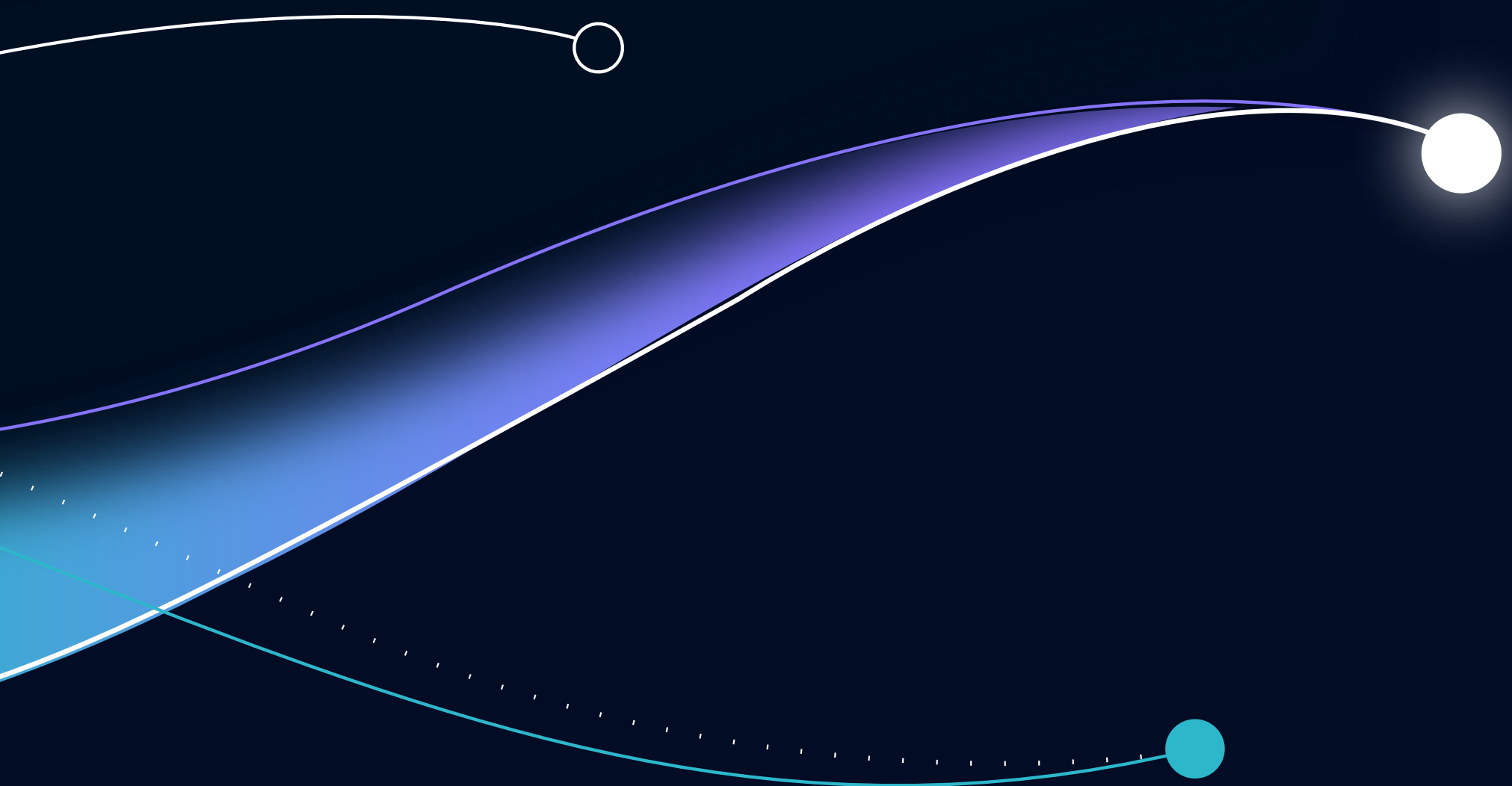
Compensation Plan

PDF



Earning levels for Isagenix® Independent Associates that appear in this publication are examples and should not be construed as typical or average. Income level achievements are dependent upon the individual Associate's business skills, personal ambition, time, commitment, activity and demographic factors. For average earnings, see the Isagenix Independent Associate Earnings Statement found at [www.IsagenixEarnings.com](http://www.IsagenixEarnings.com)





 ISAGENIX<sup>®</sup>

The logo for ISAGENIX, featuring a stylized white icon of a flower or leaf inside a hexagonal frame, followed by the brand name "ISAGENIX" in a clean, white, sans-serif font with a registered trademark symbol.